

# EDWARDS<sup>®</sup> SIGNALING

90 Fieldstone Court • Cheshire, CT 06410 • (203) 699-3000 • FAX (203) 699-3108

---

## Technical Bulletin # 970525

Date: April 23, 2001

Product: 5540M, 5530M, 5531M, 5536M Series

Product Category: Adaptatone

### Subject: Battery back-up using the Edwards EBPS6 booster supply

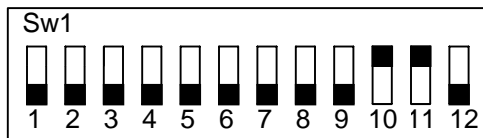
The purpose of this bulletin is to illustrate how to connect an emergency battery backup system to an Edwards Adaptatone system using the Edwards EBPS6 power booster supply in combination with the Edwards MR201/C relay. The EBPS6 will produce 6 amps of battery back up when accompanied by two Edwards 12V10A batteries.

### Parts required

One EBPS6 or EBPS10 booster supply  
Two 12V10A 12 volt 10 amp batteries  
One MR201/C relay  
One or more Adaptatone Millenium units

### Step 1

Configure NAC 3 and NAC 4 (notification appliance circuits) as auxiliary power. Per the booster supply instructions, set dipswitches 10 and 11 in the on position and all others off.

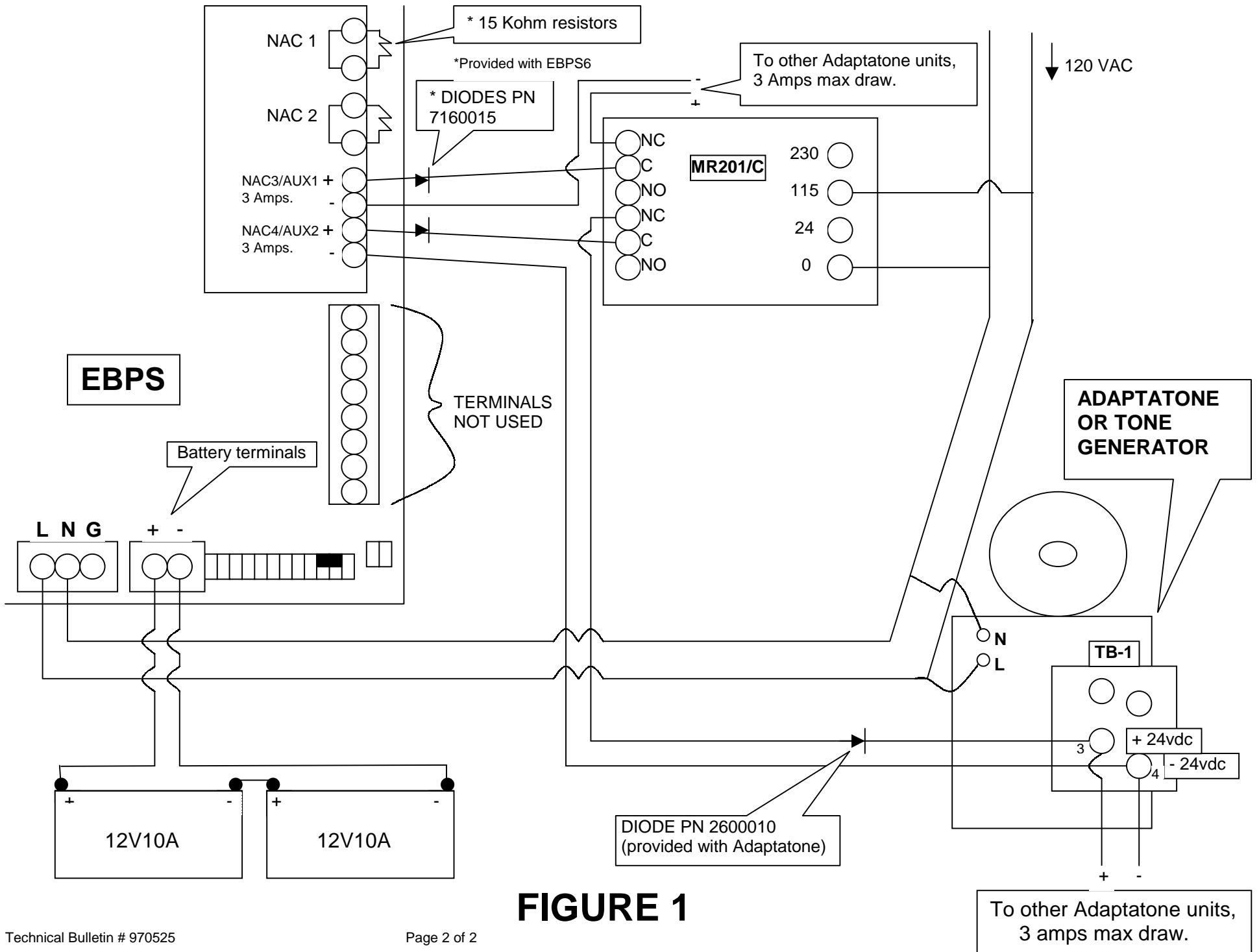


### Step 2

Connect NAC 3 and NAC 4 to the MR201/C relay. Use the diodes (PN 7160015) that are provided with the booster panel. NAC circuits 3 and 4 provide 3 amps each of back up power (See figure 1).

### Step 3

Connect the Adaptatone to the MR201 relay using the 24vdc battery back-up terminals located on TB1. Use the diodes (PN 2600010) provided with the Adaptatone. Observe polarity when making connections. See figure 1 for complete wiring details.



**FIGURE 1**