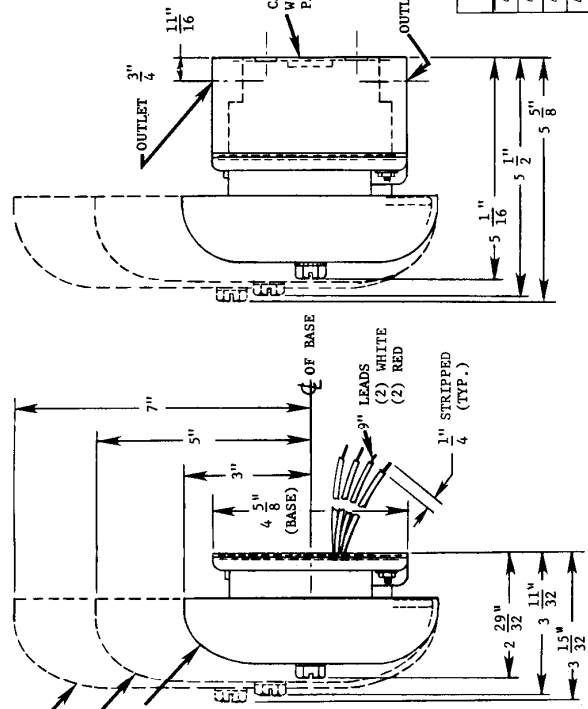


REVISIONS		DATE	CHKD.	APPROV.
ISS.	REMARKS			
3	ECN 438-16 REV. 6 REDRAWN	2-27-89		



ASSEMBLE BELL BASE TO MOUNTING PLATE WITH (2) LOCKWASHERS AND (2) NUTS. (SUPPLIED WITH BELL)

SPECIFICATIONS

CAT. NO.	SIZE	DB AT 10 FT. AC	VOLTS AC	AMPS	DC COIL RES. (OHMS)
438D-6N5	6"	91	120	0.034	900
438D-8N5	8"	94			
438D-10N5	10"	95			
438DG-6N5	6"	91			
438DG-10N5	10"	95			

449 WEATHERPROOF BACK BOX. FITS ALL MODELS ABOVE.

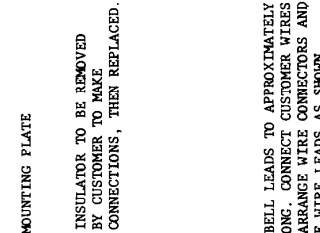
THESE BELLS ARE INTENDED FOR PUBLIC MODE SIGNALING APPLICATIONS IN ACCORDANCE WITH THE LATEST EDITION OF NFPA 726

NOTES:

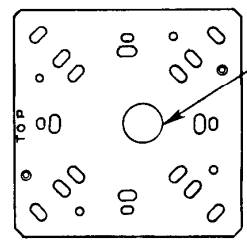
- FOR SURFACE MOUNTING: REMOVE GONG, WIRE BELL TO CIRCUIT AND MAKE CONNECTIONS INSIDE BELL BASE (SEE DETAIL "B"). THEN ATTACH MOUNTING PLATE TO WALL, MOUNT BELL MECHANISM TO MOUNTING PLATE AND REATTACH GONG.
- FOR WALL BOX MOUNTING: MOUNTING PLATE FASTENS TO SINGLE OR DOUBLE GANG 3" OCTAGON, 4" OCTAGON, 4" SQUARE WALL BOXES OR THEIR PLASTER COVER. (BOXES AND COVERS BY OTHERS) REMOVE GONG. FULL BELL WIRE LEADS THROUGH HOLE IN INSULATOR AND MOUNTING PLATE (SEE DETAIL "A"). CONNECT WIRES TO CIRCUIT INSIDE BOX. THEN ATTACH MOUNTING PLATE TO WALL BOX, MOUNT BELL MECHANISM TO MOUNTING PLATE AND REATTACH GONG.
- FOR WEATHERPROOF MOUNTING: USE CAT. NO. 449 WEATHERPROOF BOX (ORDERED SEPARATELY), SUPPLIED WITH MOUNTING HARDWARE.

WARNING
THIS DEVICE WILL NOT OPERATE WITHOUT ELECTRICAL POWER. AS FIRES FREQUENTLY CAUSE POWER INTERRUPTIONS, WE SUGGEST YOU DISCUSS FURTHER SAFEGUARDS WITH YOUR LOCAL PROTECTION SPECIALIST.

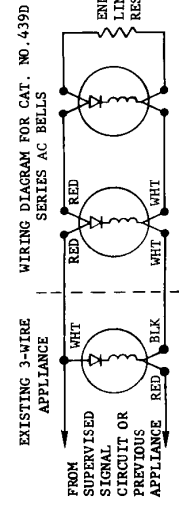
DRFG. VER 10-25-85	CHKD.	ENGR.	APPROV.	FIRST USED ON:
EDWARDS GS A UNIT OF EDWARDS FARMINGTON, CT 06030				
TITLE: CUSTOMER DRAWING FOR CAT. NO. 438D-6N5/8N5/10N5 A.C. FIRE BELLS				
DWG. NO. C-438D-6N5				
ISSUE 3				
SCALE				
SHT. OF				



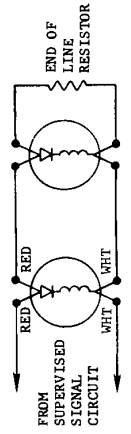
DETAIL "B"
CUSTOMER CONNECTION. WHEN BELL IS MOUNTED TO WALL WITH SURFACE WIRING. (VIEWED FROM REAR)



DETAIL "A"
MOUNTED VIEW OF PLATE



WIRING DIAGRAM #1: ADDITION OF 4-WIRE BELL(S) TO EXISTING 3-WIRE BELL SIGNAL CIRCUIT.



WIRING DIAGRAM #2: INSTALLATION WIRING DIAGRAM FOR 4-WIRE BELLS.

NOTE: USE LEADS FOR CONNECTIONS AS SHOWN. EACH WIRE RUN MUST BE BROKEN TO PROVIDE SUPERVISION OF SIGNAL CIRCUIT.