

Non-Contact Interlock/Position Switch

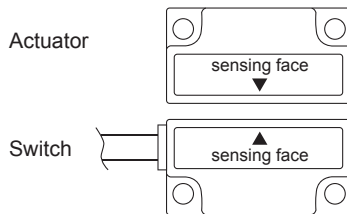
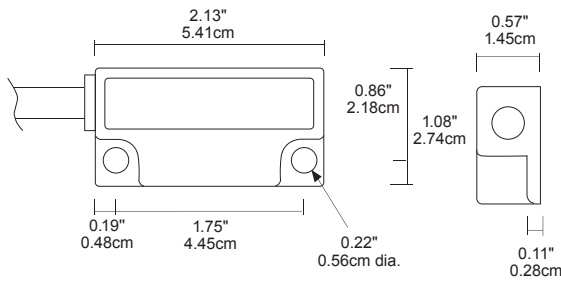
141 GuardSwitch

Applications

- Commercial Dishwashing Machine
- Parts Cleaning Machines
- Chemical Environments

General Specifications

Enclosure	Kynar® Polyvinylidene Fluoride with sonic welded lid
Temperature Range	14°F to 150°F (-10°C to 65°C)
Environmental	Hermetically Sealed Contact Switch Encapsulated in Polyurethane
NEMA Rating	1, 2, 3, 4, 4X, 5, 6, 12, 13
Protection Class	IP 67
Response Time	10 msec
Life Cycles	100,000 Under Full Load; Up to 200,000,000 Under Dry Circuit
Lead Types/O.D.	18/2 SJTO / 0.29" (0.74cm)
UL/CSA	All Models



INTERLOCK SWITCH
100 SERIES

File E 122942 File LR 89176

Order Information		Electrical Specifications					
Part Number	Contact ¹ Config.	Load Rating Max.(AC/DC)	Switching Voltage Max.(AC/DC)	Switching Current Max.(AC/DC)	Sense Range ² Nominal	Break Range Nominal	Lead Length
141-8Y-06M	N.O.	150VA/NA	120V(@1.25A)/NA	1.25A ³ /NA	1"(2.5cm)	1.2"(3cm)	6"(1.8m)
141-18Y-03M	N.O.	220VA/NA	220V(@1.0A)/NA	1.0A/NA	0.7"(1.8)	1.6"(4.1cm)	3"(0.9m)
141-Y	Actuator Only						

Warning— Each electrical rating is an individual maximum and cannot be exceeded!

- ¹ Configuration with actuator away from the switch
- ² Proximity of ferrous materials usually reduces sense range — typically by 50%. The shape and type of material cause a wide diversity of effects. Testing is required to determine actual sense range for specific applications.
- ³ Can withstand inrush surge up to 4 amps, voltage drop 1.5V, minimum switch current of 30 mA, triac output.